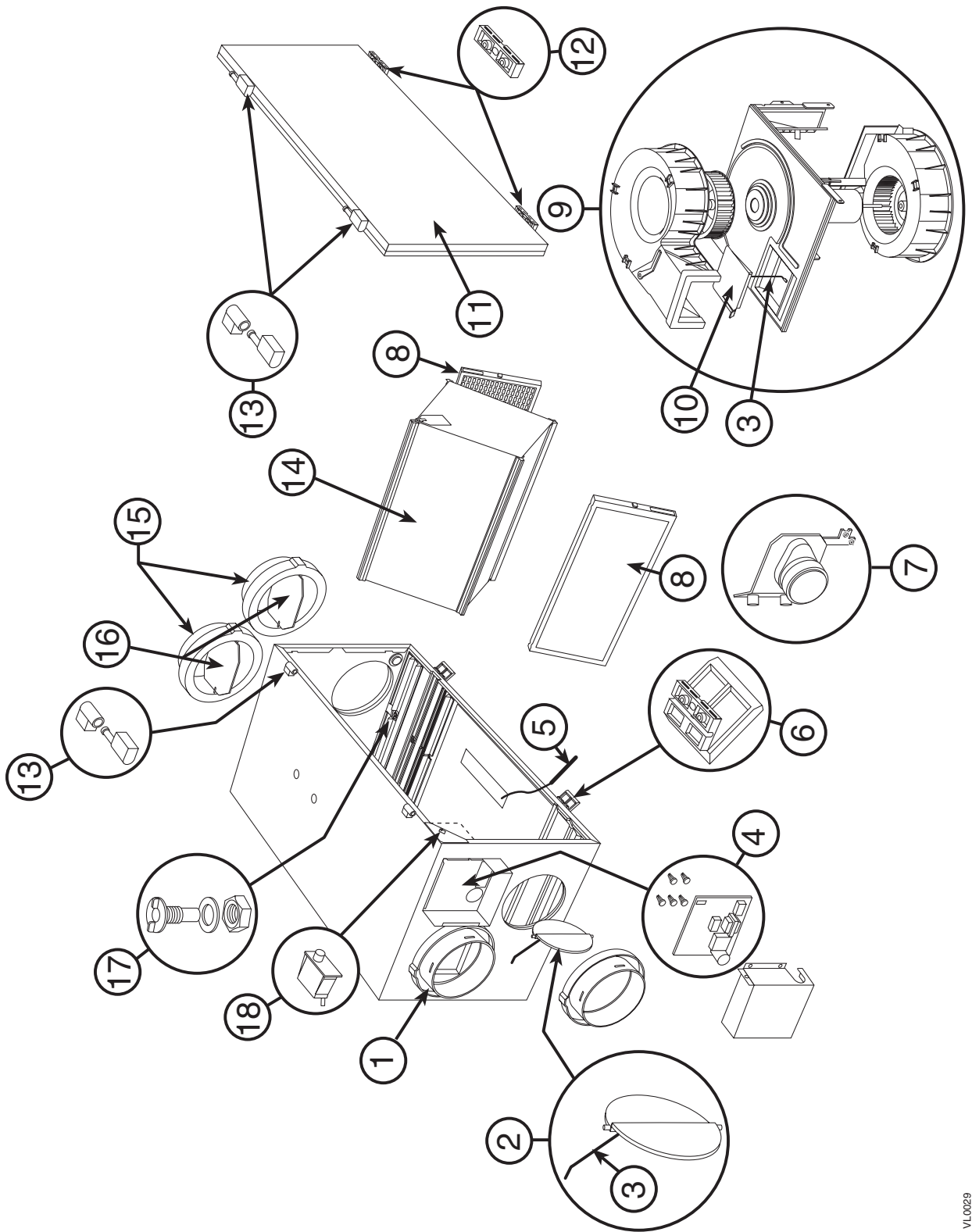


1. Service

1.1 3-D DRAWING



VL0029

1. Service (cont'd)

1.2 PARTS ORDERING CHART

No.	Description	90H NOVO+	190H NOVO+
		1601607	1601609
1	Double Collar Port #2	02257	02257
2	Damper #1 (kit)	12454	12454
3	Damper Rod (kit)	13037	13037
4	Electronic Board & Spacers (kit)	13038	13038
5	Thermistor (kit)	12895	12895
6	Door Latches & Screws	00886 (2)	00886 (2)
		00601 (4)	00601 (4)
7	Damper Actuator Assembly	13734	13734
8	Filter	03308	03308
9	Blower Assembly	12908	12912
10	Square Damper (kit)	13033	13033
11	Door Ass'y (including 12 & 13)	17206	17206
12	Door Latches (keeper) & Screws	00887 (2)	00887 (2)
		00601 (4)	00601 (4)
13	Hinge Ass'y (kit)	13036	13036
14	Heat Recovery Core	03322	03322
15	Balancing Double Collar Port	02256	02256
16	Balancing Damper	02253	02253
17	Drain Connector (kit)	03203	03203
18	Door Switch (SPST), E69 10A	01825	01825

Please note that parts not listed are not available; those parts require assembly knowledge that only manufacturer can guarantee.

TO ORDER PARTS: Contact your local distributor.

1.3 TECHNICAL SUPPORT (FOR ASSISTANCE)

For assistance, call on weekdays, from 8:30 a.m. to 5:00 p.m. (Eastern Standard Time).

NOTE: Do not call this number for ordering parts. This phone number is for the installers only.

1-888-908-2633 (toll-free)

2. Sizing

On high speed, the 90H Novo+ units produce about 150 cfm, and 190H Novo+ units produce about 189 cfm.

According to the Novoclimat Ventilation needs vs. the number of rooms chart, the 90H Novo+ units can be installed in house having up to 13 rooms*, and 190H Novo+ units can be installed in house having up to 16 rooms*.

*Houses with a non finished section having an area less than 2/3 of the house, or without basement. Refer to Novoclimat requirements for more details.